



CARTER PARK EAST

556 ACRE MASTER PLANNED CLASS A DEVELOPMENT

7500-7601 Oak Grove Rd | Everman, Tx 76140

Visit www.carterparkeast.com for more information

CROW
HOLDINGS
CAPITAL



Rob Riner Companies



CLARION PARTNERS

STREAM



HEAVY INDUSTRIAL BUILD TO SUIT

SQUARE FOOTAGE

25,000 - 300,000 SF Available
for Build to Suit

ZONING

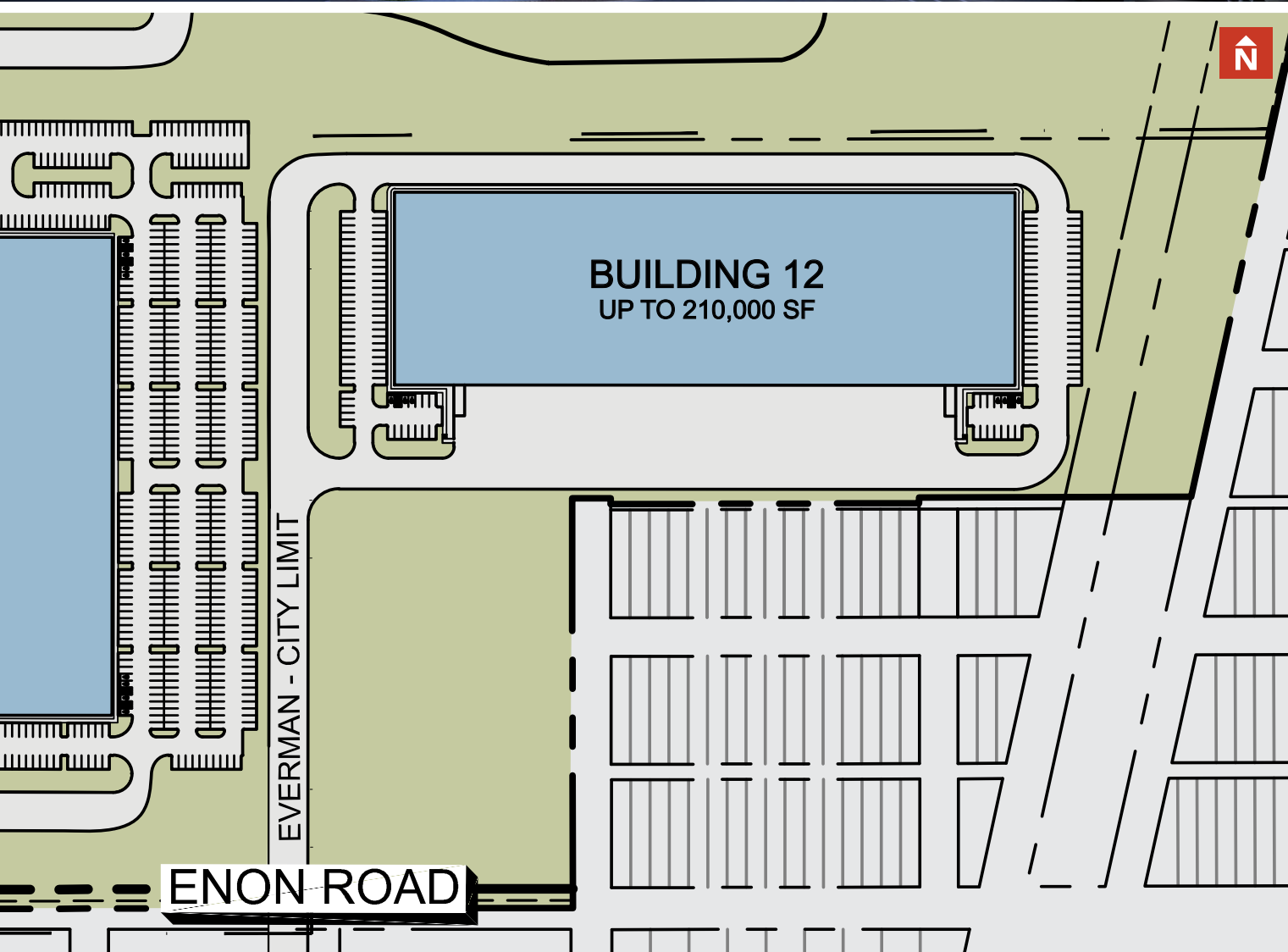
Zoned Heavy Industrial with
the City of Everman

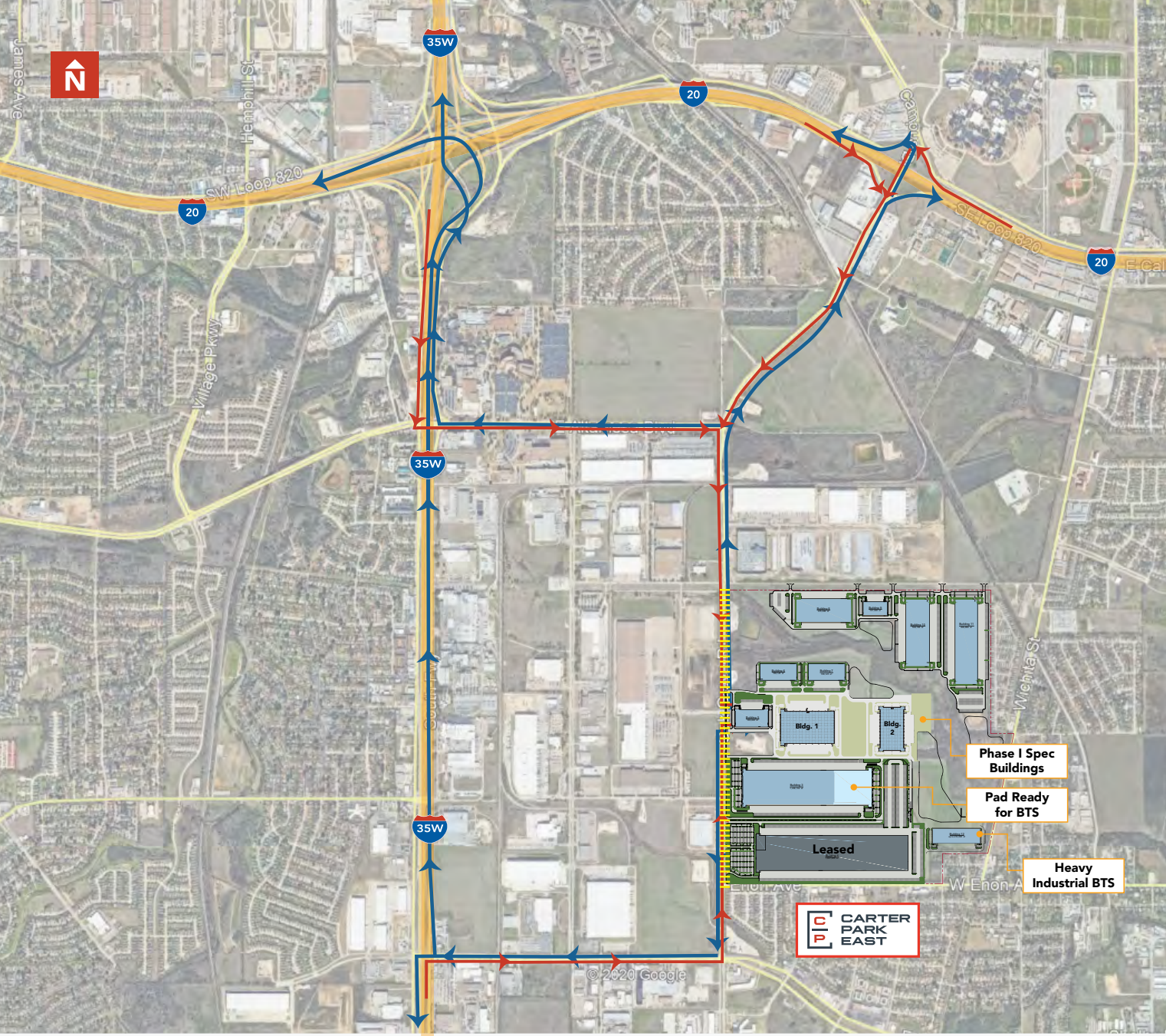
STAND ALONE BUILDINGS

Can accommodate stand alone
buildings ranging from 25,000
SF to 210,000 SF

ADDITIONAL FEATURES

- Ability to fully secure
- Opportunity for outside storage
- Flexibility on building design
- Opportunity for heavy trailer/
auto parks



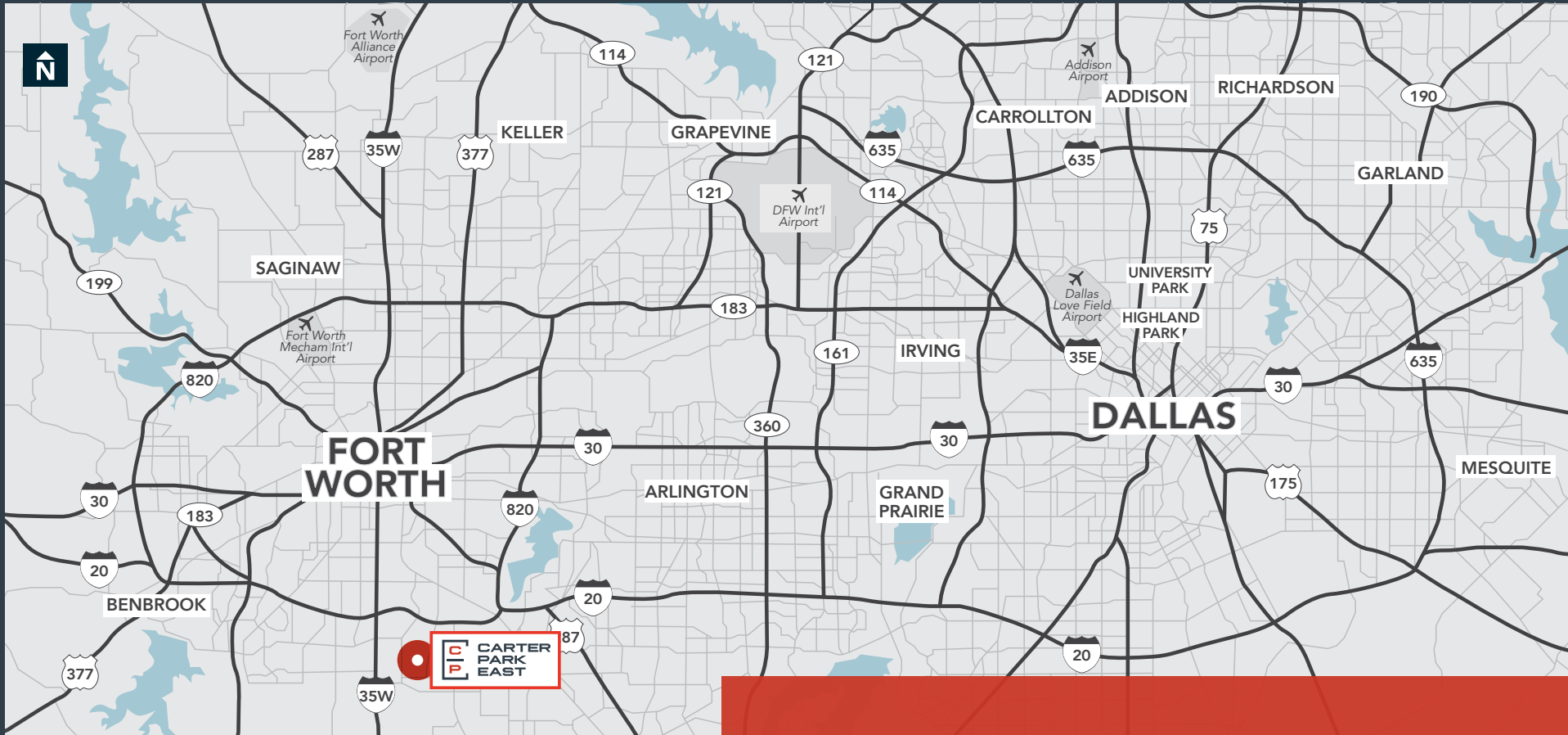


INGRESS/EGRESS

- █ INGRESS
- █ EGRESS
- IMPROVED R.O.W.

COMING SOON FALL 2021 FULLY IMPROVED 110' R.O.W."





CIP CARTER
PARK
EAST

7500-7601 Oak Grove Rd
Everman, Tx 76140

SETH KOSCHAK

☎ 817.877.1301 (o)
☎ 214.770.0853 (m)
✉ skoschak@streamrealty.com

FORREST COOK

☎ 817.877.1310 (o)
☎ 817.913.5999 (m)
✉ forrest.cook@streamrealty.com

JEFF REIN

☎ 817.877.1309 (o)
☎ 817.368.9160 (m)
✉ jeff.rein@streamrealty.com

PROFESSIONALLY
LEASED BY:

STREAM